

GENERAL FEATURES

- TORK series PL1020 remote control pulse valves are 2/2 way normally closed.
- Suitable for air
- G 1 1/2", G 2", G 2 1/2" and G 3" connection
- Without coil compact design, high reliability, flow rate, quality and performance; long life.
- The pulse valves are especially designed for dust collector service application or similar systems
- Extremely fast opening and closing
- Working Temperature: -20°C...80°C
- Minimum operating differential pressure 0,5 bar
- On request; with electronic timer
- Ambient Temperature: from -20°C...80°C
- Some application; dust filters, bunkers, dust extractors, electrostatic painting cabinets
- Coils interchangeable
- Flow factor Kv of each valve is indicated, so that the flow Q can be calculated as a function of pressure
- Pulse valves must be used with filtered fluids.
- Pulse valve can be mounted in any position without affecting operation; vertical with coil upwards preferred.
- Standard pipe connection is G (BSP) (ISO 228-1) and on request; other pipe connections are available (NPT (ANSI 1.20.3))

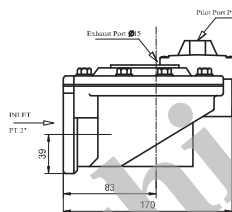
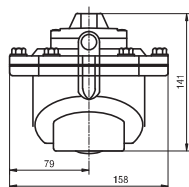


Application, TORK Pulse Valves



MATERIALS IN CONTACT WITH FLUIDS

- Body : Die Cast Aluminium
- Internal Parts : Stainless Steel
- Sealing : NBR and NEOPRENE
- Shading Ring : Copper
- Seats : Aluminium
- Core Tube : Stainless Steel
- Springs : Stainless Steel



Pilot Port PT 1/4"

Exhaust Port G 1/2"

INLET PT 2"

39

83

170

INLET PT 2"

191

PT 1/4"

PT 2"

PT 2"

PT 2"

PT 2"

PT 2"

PT 2"

PT 2"

PT 2"

PT 2"

PT 2"

PT 2"

PT 2"

PT 2"

PT 2"

PT 2"

PT 2"

PT 2"

PT 2"

PT 2"

PT 2"

PT 2"

PT 2"

PT 2"

PT 2"

PT 2"

PT 2"

PT 2"

PT 2"

PT 2"

PT 2"

PT 2"

PT 2"

PT 2"

PT 2"

PT 2"

PT 2"

PT 2"

PT 2"

PT 2"

PT 2"

PT 2"

PT 2"

PT 2"

PT 2"

PT 2"

PT 2"

PT 2"

PT 2"

PT 2"

PT 2"

PT 2"

PT 2"

PT 2"

PT 2"

PT 2"

PT 2"

PT 2"

PT 2"

PT 2"

PT 2"

PT 2"

PT 2"

PT 2"

PT 2"

PT 2"

PT 2"

PT 2"

PT 2"

PT 2"

PT 2"

PT 2"

PT 2"

PT 2"

PT 2"

PT 2"

PT 2"

PT 2"

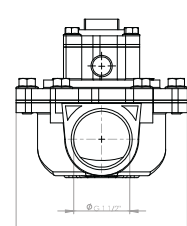
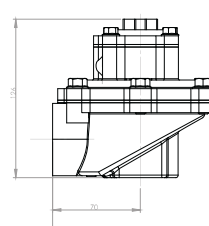
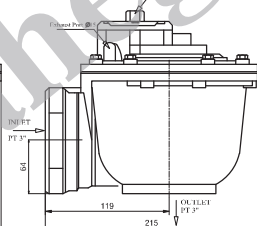
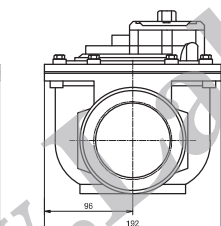
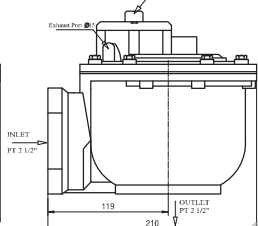
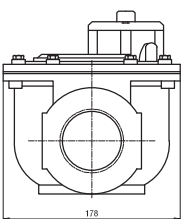
PT 2"

PT 2"

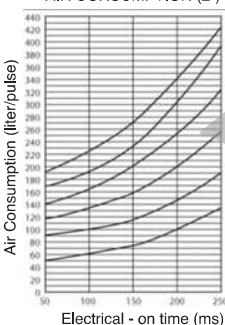
PT 2"

PT 2"

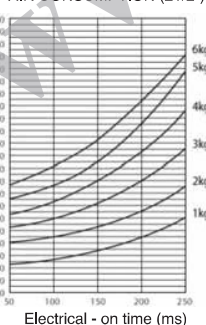
PT 2"



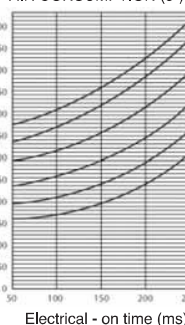
AIR CONSUMPTION (2")



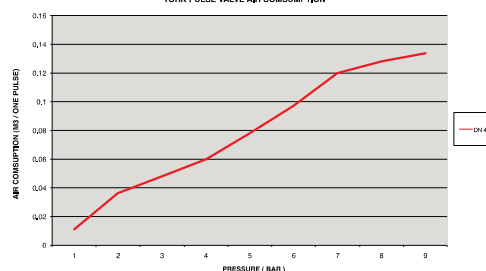
AIR CONSUMPTION (2 1/2")



AIR CONSUMPTION (3")



TORK PULSE VALVE AIR CONSUMPTION



| Valve Type / Order no | Connection Size | Orifice size | Pressure | | KV | Fluid Temperature | | Seal | Weight |
|-----------------------|-----------------|--------------|----------|-----|--------|-------------------|-----|----------|--------|
| | | | min | max | | min | max | | |
| PL1020 | G | mm | bar | bar | lt/min | min | max | | (kg) |
| PL1020.07 | 1 1/2" | 44 | 0.5 | 8 | 774 | -20 | 80 | NEOPRENE | 1.04 |
| PL1020.08 | 2" | 50 | 0.5 | 8.5 | 1065 | -20 | 80 | NBR | 1.9 |
| PL1020.09 | 2 1/2" | 65 | 0.5 | 8.5 | 1378 | -20 | 80 | NBR | 3.3 |
| PL1020.10 | 3" | 80 | 0.5 | 8.5 | 2040 | -20 | 80 | NBR | 3.5 |